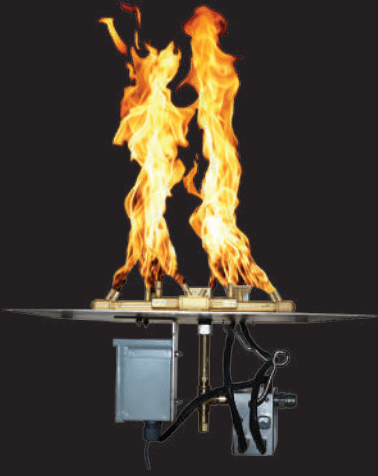


WARMING TRENDS®

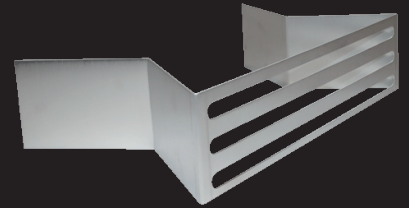
SUPERIOR FIRE FEATURE SYSTEMS



**PLATINUM AUTOMATIC
IGNITION SYSTEM™**



**AON FIRE TABLE
COLLECTION**

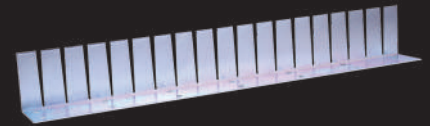


UPGRADED VENTS



**MERCURY IGNITION
SYSTEM™**

INNOVATIONS FROM THE LEADER IN OUTDOOR FIRE



**UPGRADED NO-DRILL
COLLARS**



**WATERSTOP®
FITTING**



**OUTDOOR FIREPLACE
COLLECTION**



**PLATE WITH IGNITION
KNOCKOUTS**



Visit us at Warming-Trends.com for
up-to-date product information.

PATENTED
www.Warming-Trends.com/Patents

Platinum Automatic Ignition System and Mercury Ignition System are
trademarks owned by and used with permission from Catalyst Electronics, LLC.

GAS INSERT KITS FOR HIGH FORMAT BELVEDERE FIRE PIT

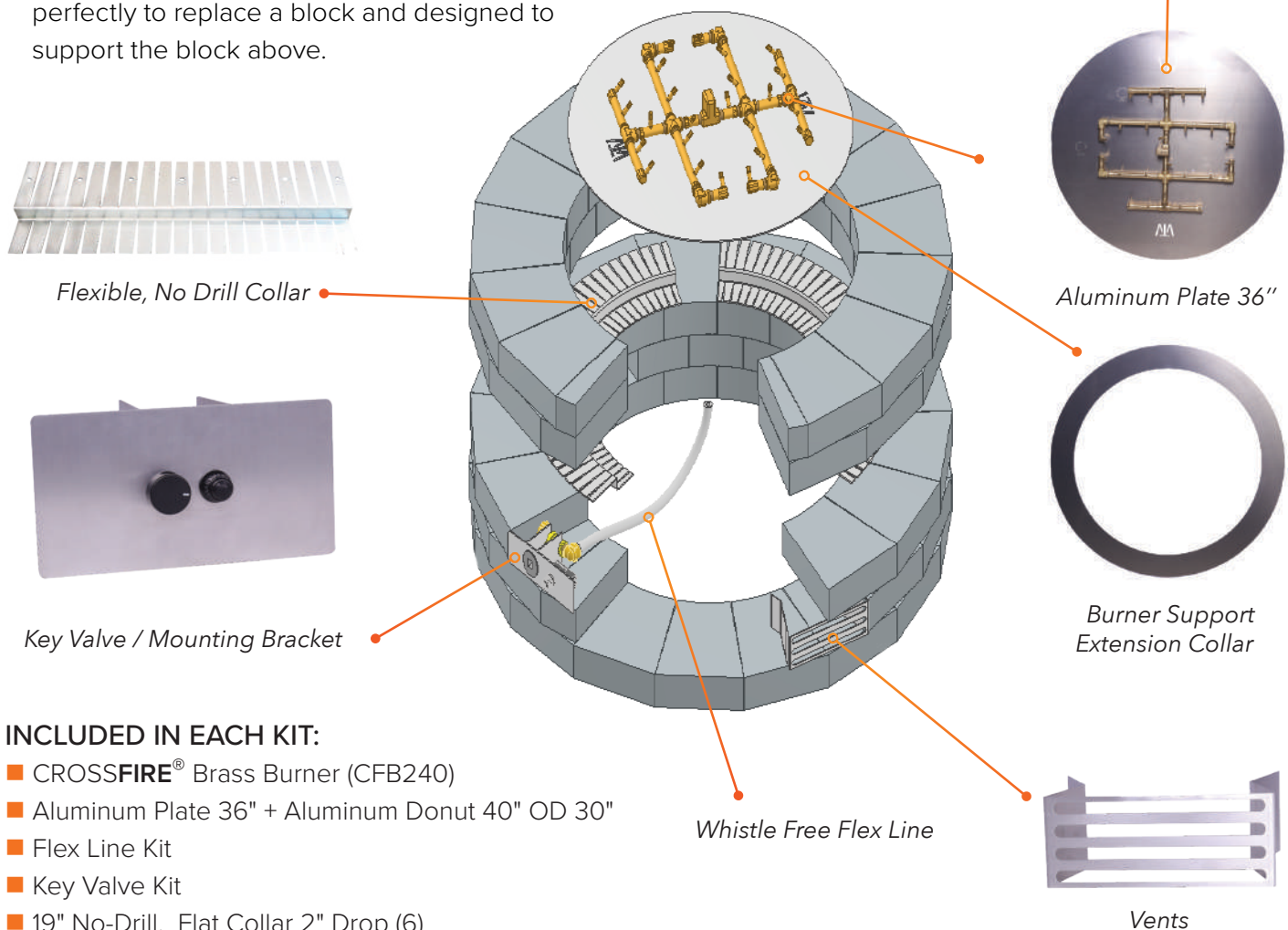


104311 (LP) / 104312 (NG)

- Flexible, No Drill Collars insert between blocks.
- Redesigned Mounting Bracket eliminates need to drill through block to mount Key Valve.
- Key Valve Mounting Bracket and Vents are sized perfectly to replace a block and designed to support the block above.

The Revolutionary WATERSTOP® fitting protects electronics and valves from water and debris.

CROSSFIRE® Brass Burner (CFB240)



INCLUDED IN EACH KIT:

- CROSSFIRE® Brass Burner (CFB240)
- Aluminum Plate 36" + Aluminum Donut 40" OD 30"
- Flex Line Kit
- Key Valve Kit
- 19" No-Drill, Flat Collar 2" Drop (6)
- 1 1/8" x 6" Vents (2)
- 1 1/8" x 6" Belvedere Mounting Bracket