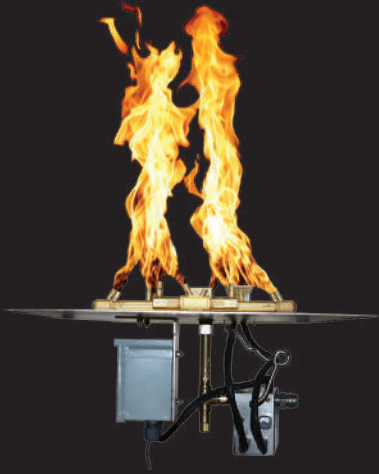


WARMING TRENDS®

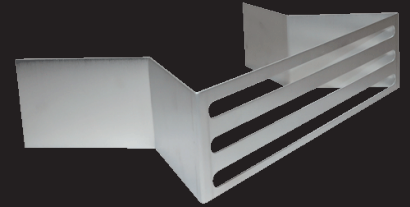
SUPERIOR FIRE FEATURE SYSTEMS



PLATINUM IGNITION SYSTEM™



AON FIRE TABLE COLLECTION

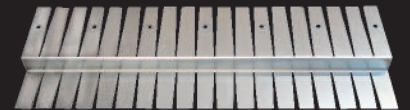


UPGRADED VENTS



MERCURY IGNITION SYSTEM™

INNOVATIONS FROM THE LEADER IN OUTDOOR FIRE



UPGRADED NO-DRILL COLLARS



WATERSTOP® FITTING



OUTDOOR FIREPLACE COLLECTION



PLATE WITH IGNITION KNOCKOUTS



Visit us at Warming-Trends.com for up-to-date product information.

PATENTED
www.Warming-Trends.com/Patents

Mercury Ignition System™ and Platinum Ignition System™ are trademarks owned by and used with permission from Catalyst Electronics, LLC.

GAS INSERT KITS

FOR HIGH FORMAT BELVEDERE FIRE PIT

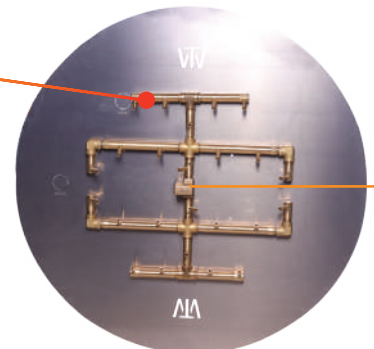


104311 (LP) / 104312 (NG)

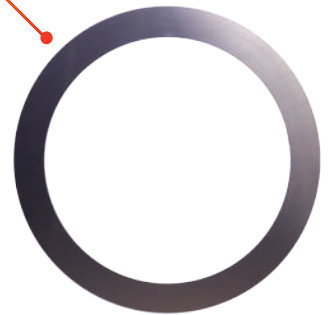
- Flexible, No-Drill Collars insert between blocks.
- Redesigned Mounting Bracket eliminates need to drill through block to mount Key Valve.
- Key Valve Mounting Bracket and Vents are sized perfectly to replace a block and designed to support the block above.

The Revolutionary **WATERSTOP®** fitting protects electronics and valves from water and debris.

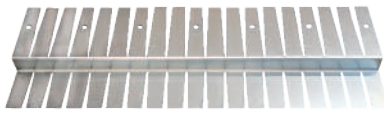
CROSSFIRE® Brass Burner (CFB240)



Aluminum Plate 35 1/2"



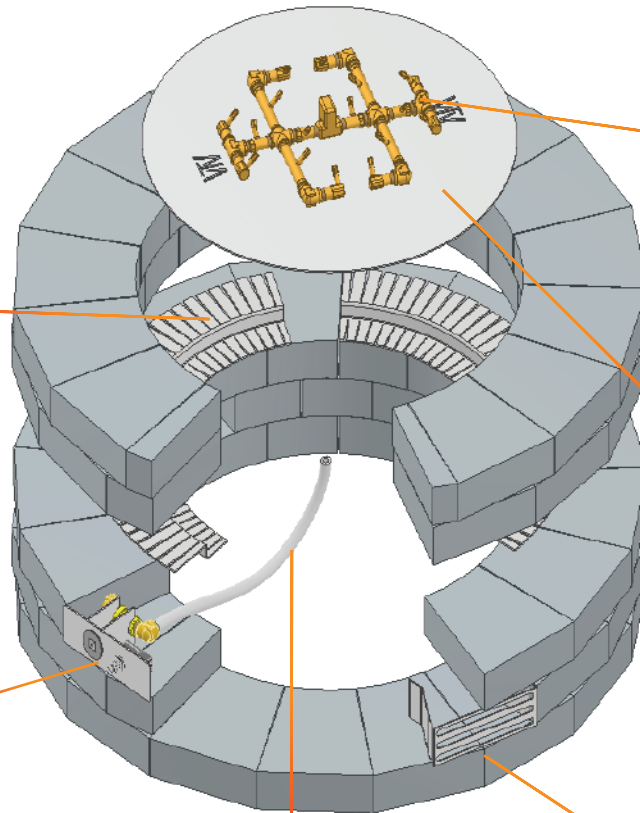
Burner Support Extension Collar



Flexible, No-Drill Collar



Key Valve / Mounting Bracket



Whistle Free Flex Line



Vent(s)

INCLUDED IN EACH KIT:

- CROSSFIRE® Brass Burner (CFB240)
- Aluminum Plate 36" + Aluminum Donut
- Flex Line Kit
- Key Valve Kit
- Flexible, No-Drill Collars (5)
- 1 1/8" x 6" Vents (2)
- 1 1/8" x 6" Mounting Bracket

SUPERIOR PRODUCTS | MADE IN THE U.S.A. | OUTSTANDING CUSTOMER SERVICE

Visit us online at Warming-Trends.com for more information and pricing or call 303-346-2224 to speak with one of our Flame Specialists today.