

# WARMING TRENDS®

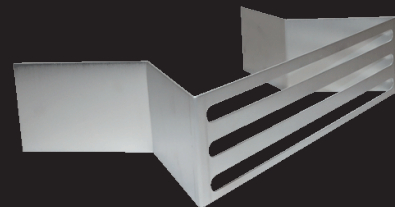
SUPERIOR FIRE FEATURE SYSTEMS



**PLATINUM AUTOMATIC  
IGNITION SYSTEM™**



**AON FIRE TABLE  
COLLECTION**

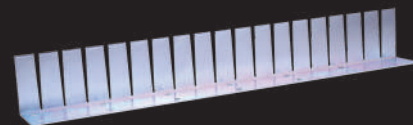


**UPGRADED VENTS**



**MERCURY IGNITION  
SYSTEM™**

## INNOVATIONS FROM THE LEADER IN OUTDOOR FIRE



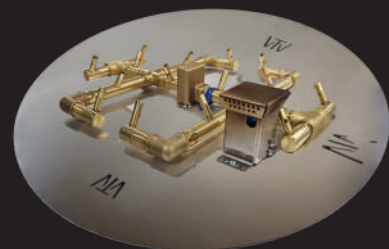
**UPGRADED NO-DRILL  
COLLARS**



**WATERSTOP®  
FITTING**



**OUTDOOR FIREPLACE  
COLLECTION**



**PLATE WITH IGNITION  
KNOCKOUTS**



Visit us at [Warming-Trends.com](http://Warming-Trends.com) for  
up-to-date product information.

PATENTED  
[www.Warming-Trends.com/Patents](http://www.Warming-Trends.com/Patents)

Platinum Automatic Ignition System and Mercury Ignition System are  
trademarks owned by and used with permission from Catalyst Electronics, LLC.

## GAS INSERT KITS FOR UNILOCK SUNSET PAVER FIRE FEATURES

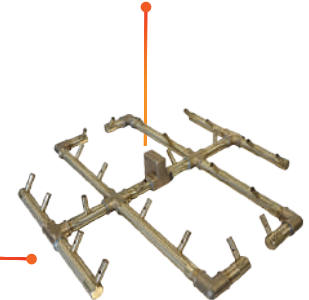
The Revolutionary WATERSTOP® fitting protects electronics and valves from water and debris.

### UPKSS (LP/NG)

- Flexible, No-Drill Collars insert between blocks.
- Redesigned Mounting Bracket eliminates need to drill through block to mount Key Valve.
- Key Valve Mounting Bracket and Vents are sized perfectly to replace a block and designed to support the block above.



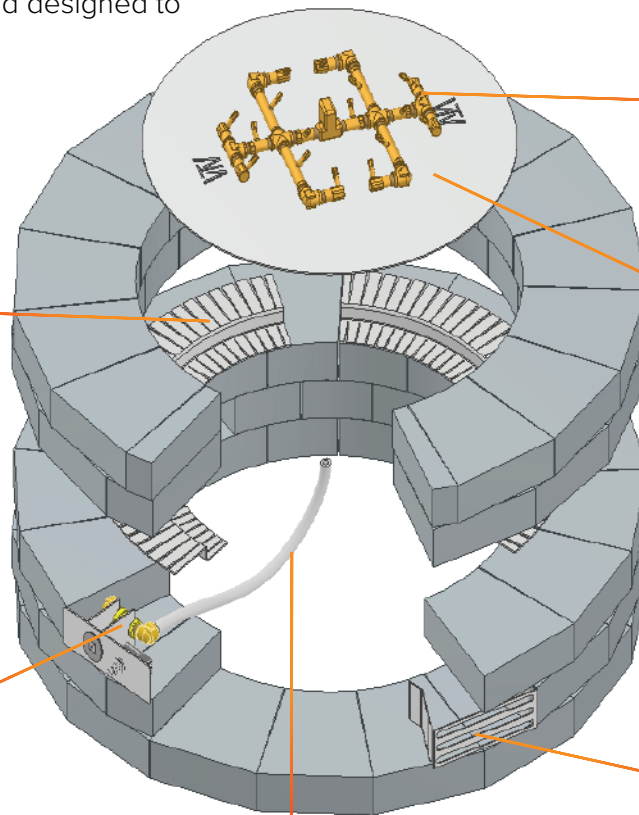
Flexible, No-Drill Collar



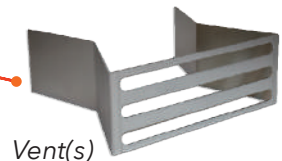
CROSSFIRE® Brass Burner (CFB240)



Key Valve / Mounting Bracket



Aluminum Plate 35.5"



Vent(s)

Whistle Free Flex Line

### INCLUDED IN EACH KIT:

- CROSSFIRE® Brass Burner (CFB240)
- Aluminum Plate 35.5"
- Flex Line Kit
- Key Valve Kit
- Flexible, No-Drill Collars (6)
- 8 5/8" x 4" Vents (2)
- 8 5/8" x 4" Mounting Bracket

- Made in the USA
- Superior Flame
- Lifetime Warranty
- 100% Brass

SUPERIOR PRODUCTS | MADE IN THE U.S.A. | OUTSTANDING CUSTOMER SERVICE

Visit us online at [Warming-Trends.com](http://Warming-Trends.com) for more information and pricing or call 303-346-2224 to speak with one of our Flame Specialists today.