

WARMING TRENDS®

GAS INSERT KITS FOR PAVER FIRE PITS



Visit us online at Warming-Trends.com for more information and pricing or call **303-346-2224** to speak with one of our Flame Specialists today.

WARMING TRENDS GAS INSERTS

Warming Trends® makes it easy to install or convert a paver fire pit to gas with our gas insert kits. Each kit includes the CROSSFIRE® Brass Burner which utilizes cutting-edge jet technology to produce a taller, brighter, and more natural flame – all while consuming less gas. Warming Trends® Universal and Specialized Gas Insert Kits are designed to work with a variety of paver company block kits, including everything needed to convert your paver fire pit.

OPTIONAL IGNITION SYSTEMS

- Push Button Ignition (PBIK)
- Mercury Ignition (MERC)
- 3 Volt (3VIK)
- Standard 24V (24VIK)
- Premium 24V (P24VIK)

Light your Fire Feature with the simplicity of a match or choose a fully automatic ignition system.



UNIVERSAL GAS INSERT KITS

Warming Trends Gas Inserts are designed to let you easily create a stunning fire feature in an existing or new paver block pit. Each kit includes everything needed to quickly and easily convert to a gas system.

INCLUDED IN EACH KIT:

- CROSSFIRE® Brass Burner
- Aluminum Plate
- Flex Line Kit
- Key Valve Kit
- Collars



CFB180 on Circular Plate

Find out which Ignition System is compatible for your project.



UNIVERSAL GAS INSERT KITS

CIRCULAR OPENINGS

**23" - 26"
Circular
Opening**

UPK120C23NG | UPK120C23LP

CFB120 Original Brass Burner with WATERSTOP™
23" Circular Aluminum Plate
Flex Line/Key Valve Kit
Key Valve Extension
(4) Collars

**29" - 32"
Circular
Opening**

UPK180C29NG | UPK180C29LP

CFB180 Original Brass Burner with WATERSTOP
29" Circular Aluminum Plate
Flex Line/Key Valve Kit
Key Valve Extension
(5) Collars

**35" - 38"
Circular
Opening**

UPK240C35NG | UPK240C35LP

CFB240 Original Brass Burner with WATERSTOP
35" Circular Aluminum Plate
Flex Line/Key Valve Kit
Key Valve Extension
(6) Collars

**39" - 42"
Circular
Opening**

UPK240C39NG | UPK240C39LP

CFB240 Original Brass Burner with WATERSTOP
39" Circular Aluminum Plate
Flex Line/Key Valve Kit
Key Valve Extension
(7) Collars

SQUARE OPENINGS

**23" - 26"
Square
Opening**

UPK120S23NG | UPK120S23LP

CFB120 Original Brass Burner with WATERSTOP
23" Square Aluminum Plate
Flex Line/Key Valve Kit
Key Valve Extension
(4) Collars

**26" - 29"
Square
Opening**

UPK120S26NG | UPK120S26LP

CFB120 Original Brass Burner with WATERSTOP
26" Square Aluminum Plate
Flex Line/Key Valve Kit
Key Valve Extension
(4) Collars

**29" - 32"
Square
Opening**

UPK180S29NG | UPK180S29LP

CFB180 Original Brass Burner with WATERSTOP
29" Square Aluminum Plate
Flex Line/Key Valve Kit
Key Valve Extension
(5) Collars

**35" - 38"
Square
Opening**

UPK240S35NG | UPK240S35LP

CFB240 Original Brass Burner with WATERSTOP
35" Square Aluminum Plate
Flex Line/Key Valve Kit
Key Valve Extension
(6) Collars

**39" - 42"
Square
Opening**

UPK240S39NG | UPK240S39LP

CFB240 Original Brass Burner with WATERSTOP
39" Square Aluminum Plate
Flex Line/Key Valve Kit
Key Valve Extension
(7) Collars

RECTANGULAR OPENINGS

**17 ½" - 20 ½"
x 32" - 35"**

**Rectangular
Opening**

UPK160H3217NG | UPK160H3217LP

CFBH160 H-Style Brass Burner with WATERSTOP
17 ½" x 32" Rectangular Aluminum Plate
Flex Line/Key Valve Kit
Key Valve Extension
(5) Collars



Visit us online at Warming-Trends.com for more information and pricing
or call **303-346-2224** to speak with one of our Flame Specialists today.

SPECIALIZED GAS INSERT KITS

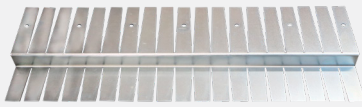
The All-New Specialized Gas Insert Kits fit top-selling paver fire pit brands and are easier to install than ever before! The Mounting Brackets and Collars have been re-engineered to eliminate the need for a drill to install. Each kit includes all components needed to create an exceptional fire feature including the patented CROSSFIRE™ burner, aluminum plate, no-drill collars, specifically sized vents, and mounting bracket which replace a block while still offering support to the blocks above and a Flex Line/ Key Valve Kit.

SPECIALIZED GAS INSERT KITS INCLUDE:

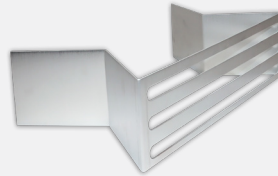
- CROSSFIRE® Brass Burner
- Aluminum Plate
- Specifically-sized Mounting Bracket and Vents
- Flexible, No Drill Collars
- Flex Line / Key Valve Kit



Raffinato Block Kit and components pictured



Flexible, No Drill Collars install between blocks.



Vents are sized perfectly to replace a block and support the block above.



Redesigned Mounting Bracket eliminates need to drill through block to mount Key Valve.

Valencia Gas Insert

UPKVLLP | UPKVLNG

CFB180 Original Brass Burner with WATERSTOP™
29" Circular Aluminum Plate
Flex Line/Key Valve Kit
9 1/4" x 3" Mounting Bracket
(5) Flexible, No Drill Collars
(2) 9 1/4" x 3" Vents

Raffinato Gas Insert

UPKRRNG | UPKRRLP

CFBH160 H-Style Brass Burner with WATERSTOP
32" x 17.75" Rectangular Aluminum Plate
Flex Line/Key Valve Kit
14" x 3.5" Mounting Bracket
(5) Flexible, No Drill Collars
(2) 14" x 3.5" Vents

Polycor Gas Insert

103446NG | 103447LP

CFBH160 H-Style Brass Burner with WATERSTOP
42.5" x 13.5" Rectangular Aluminum Plate
Flex Line/Key Valve Kit
14.5" x 5" Mounting Bracket
(6) Flexible, No Drill Collars
(2) 14.5" x 5" Vents

Polycor Gas Insert

103441NG | 103442LP

CFB180 Original Brass Burner with WATERSTOP
28" Square Aluminum Plate
Flex Line/Key Valve Kit
14.5" x 5" Mounting Bracket
(5) Flexible, No Drill Collars
(2) 14.5" x 5" Vents

Weston Gas Insert

UPKBWLP | UPKBWNG

CFB240 Original Brass Burner with WATERSTOP
39" Circular Aluminum Plate
Flex Line/Key Valve Kit
11 3/8" x 4" Mounting Bracket
(6) Flexible, No Drill Collars
(2) 11 3/8" x 4" Vents

Prescott Gas Insert

UPKPSLP | UPKPSNG

CFB180 Original Brass Burner with WATERSTOP
27.25" Square Aluminum Plate
Flex Line/Key Valve Kit
9" x 4 1/8" Mounting Bracket
(6) Flexible, No Drill Collars
(2) 9" x 4 1/8" Vents

Brandon Gas Insert

UPKBSLP | UPKBSNG

CFB180 Original Brass Burner with WATERSTOP
27.25" Square Aluminum Plate
Flex Line/Key Valve Kit
14" x 3 1/8" Mounting Bracket
(6) Flexible, No Drill Collars
(2) 14" x 3 1/8" Vents

View the most up-to-date Plates, Pans, and Covers page.

