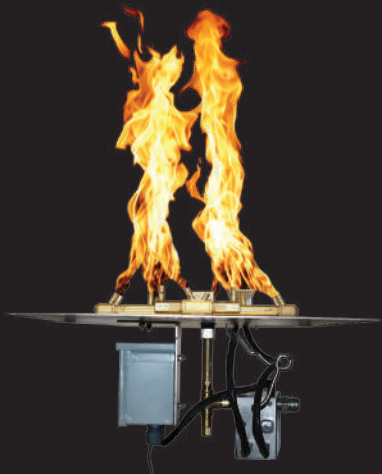


WARMING TRENDS®

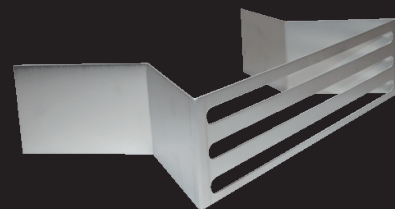
SUPERIOR FIRE FEATURE SYSTEMS



**PLATINUM AUTOMATIC
IGNITION SYSTEM™**



**AON FIRE TABLE
COLLECTION**

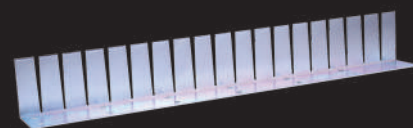


UPGRADED VENTS



**MERCURY IGNITION
SYSTEM™**

INNOVATIONS FROM THE LEADER IN OUTDOOR FIRE



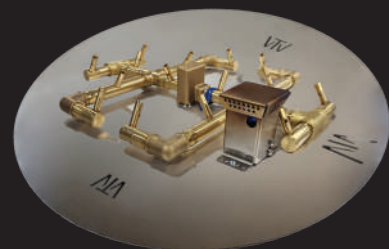
**UPGRADED NO-DRILL
COLLARS**



**WATERSTOP®
FITTING**



**OUTDOOR FIREPLACE
COLLECTION**



**PLATE WITH IGNITION
KNOCKOUTS**



Visit us at Warming-Trends.com for
up-to-date product information.

PATENTED
www.Warming-Trends.com/Patents

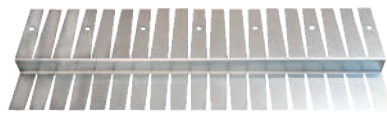
Platinum Automatic Ignition System and Mercury Ignition System are
trademarks owned by and used with permission from Catalyst Electronics, LLC.

GAS INSERT KITS FOR UNILOCK SUNSET PAVER FIRE FEATURES

The Revolutionary WATERSTOP® fitting protects electronics and valves from water and debris.

104376 (NG) | 104377 (LP)

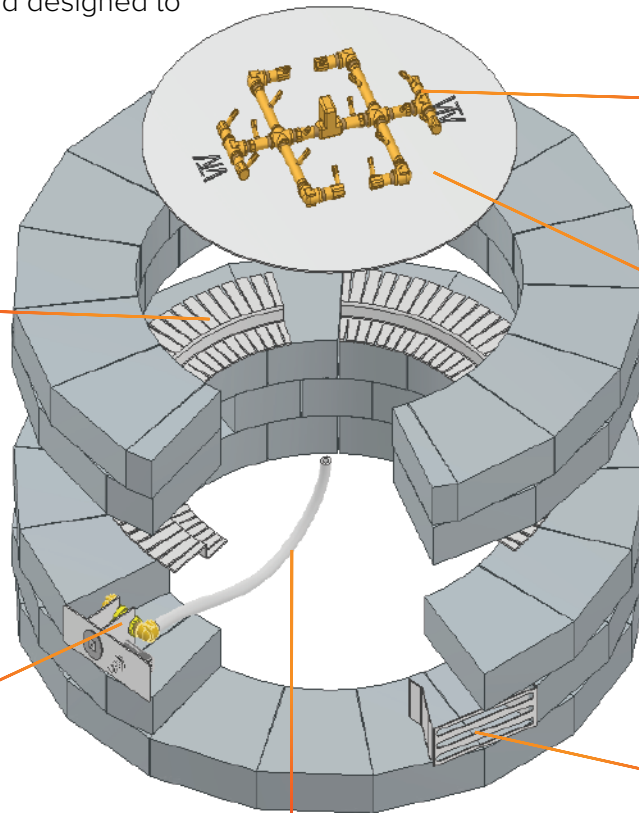
- Flexible, No-Drill Collars insert between blocks.
- Redesigned Mounting Bracket eliminates need to drill through block to mount Key Valve.
- Key Valve Mounting Bracket and Vents are sized perfectly to replace a block and designed to support the block above.



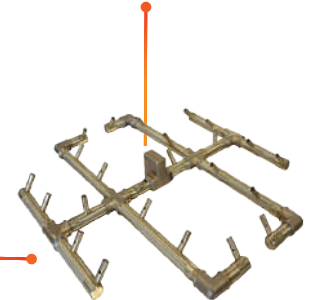
Flexible, No-Drill Collar



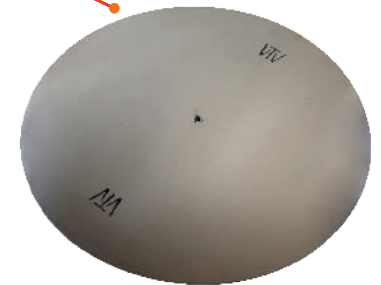
Key Valve / Mounting Bracket



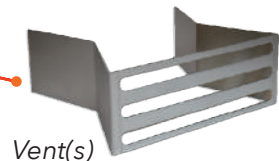
Whistle Free Flex Line



CROSSFIRE® Brass Burner (CFB240)



Aluminum Plate 35.5"



Vent(s)

INCLUDED IN EACH KIT:

- CROSSFIRE® Brass Burner (CFB240)
- Aluminum Plate 35.5"
- Flex Line Kit
- Key Valve Kit
- Flexible, No-Drill Collars (6)
- 8 5/8" x 4" Vents (2)
- 8 5/8" x 4" Mounting Bracket

- Made in the USA
- Superior Flame
- Lifetime Warranty
- 100% Brass

SUPERIOR PRODUCTS | MADE IN THE U.S.A. | OUTSTANDING CUSTOMER SERVICE

Visit us online at Warming-Trends.com for more information and pricing or call 303-346-2224 to speak with one of our Flame Specialists today.